

Altsaxophon in Es



# Homeparty

## Absolute Beginners Brass

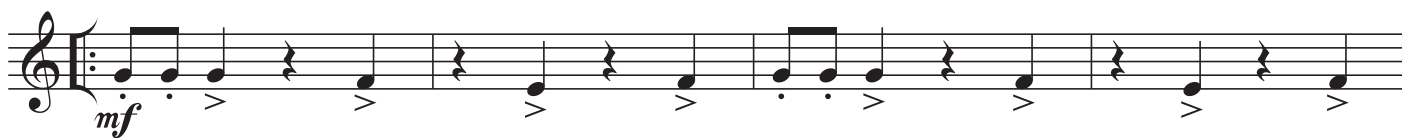
Stefan Pahlke

Arr.: J. Vollerthun | St. Pahlke

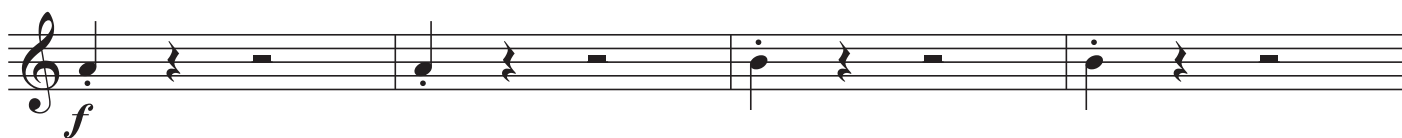
1 ♩ = 110



### A Homeparty - Begleitung



### B



**A** Homeparty - Melodie

Musical notation for section A, first line. It begins with a treble clef and a repeat sign. The melody consists of quarter notes and eighth notes. The dynamic marking *mf* is placed below the first few notes.

Musical notation for section A, second line, starting at measure 30. It continues the melody from the first line. The first ending is marked with a box containing '1.' and 'Fine'. The second ending is marked with a box containing '2.'. The piece concludes with a double bar line.

**B**

Musical notation for section B, first line. It begins with a treble clef and a dynamic marking *f*. The notation consists of dotted quarter notes followed by eighth rests, creating a rhythmic accompaniment.

Musical notation for section B, second line, starting at measure 39. It continues the rhythmic accompaniment from the first line. The instruction 'D.C. al Fine' is written above the staff. The piece ends with a double bar line.