

Trompete in C

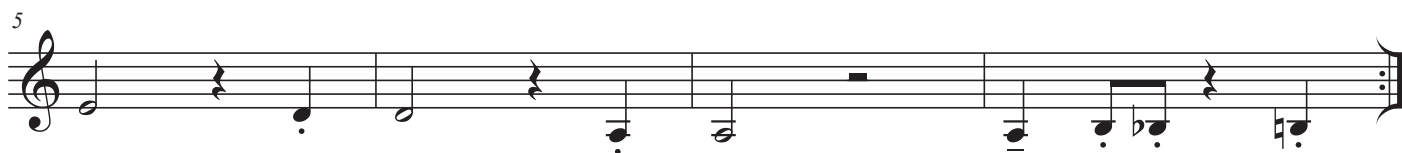
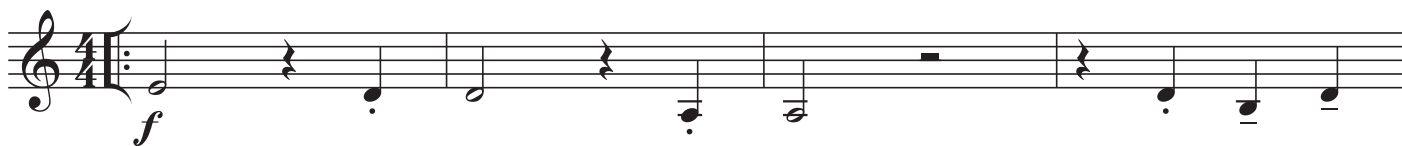


Back to Brass

Absolute Beginners Brass

AC/DC
St. Pahlke | J. Vollerthun

1 ♩ = 180

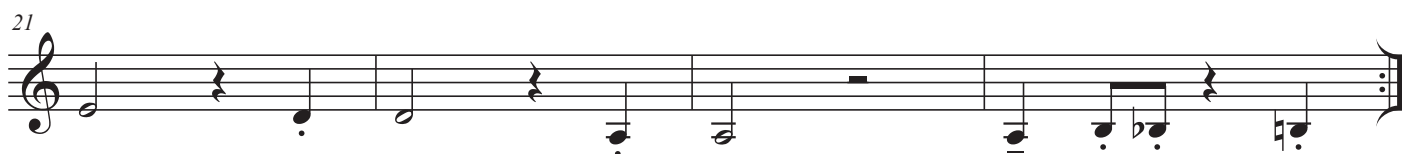


2



"Back to Brass"

A ♩ = 180



B



"Back to Brass" in allgemeiner Notation

A

$\text{♩} = 90$

Musical notation for section A, consisting of a single staff in treble clef. The piece begins with a repeat sign. The tempo is marked as quarter note = 90. The notation includes eighth notes, quarter notes, and quarter rests, with some notes beamed together. The key signature has one flat (B-flat).

B

Musical notation for section B, consisting of a single staff in treble clef. The notation includes eighth notes, quarter notes, and quarter rests, with some notes beamed together. The key signature has one flat (B-flat).