

Tenorsaxophon in B



Back to Brass

Absolute Beginners Brass

AC/DC
St. Pahlke | J. Vollerthun

1 ♩ = 180

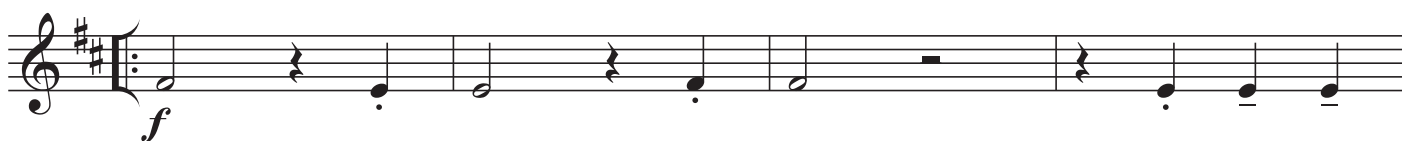


2



"Back to Brass"

A ♩ = 180



B



"Back to Brass" in allgemeinsers Notation

A

$\text{♩} = 90$

Musical notation for section A, featuring a treble clef, a key signature of one sharp (F#), and a tempo marking of quarter note = 90. The notation consists of a single staff with a repeat sign at the beginning and end. The melody is primarily composed of quarter notes and eighth notes, with some rests and a final cadence.

B

Musical notation for section B, featuring a treble clef, a key signature of one sharp (F#), and a repeat sign at the beginning and end. The melody is primarily composed of quarter notes and eighth notes, with some rests and a final cadence.