



MHDT

Tp in B leicht 2

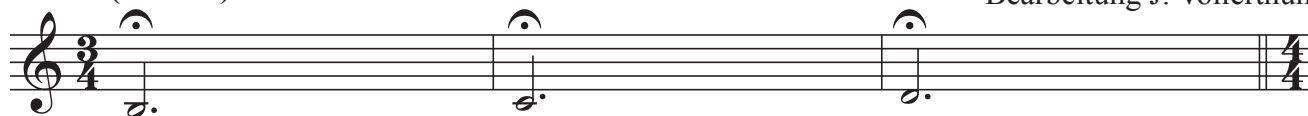
Grande Fanfare - Berlin Brass Festival 2021

Stefan Pahlke

Bearbeitung J. Vollerthun

A

(♩ = 120)



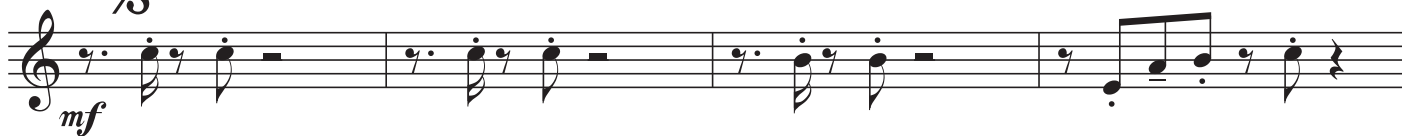
B

mf



C

mf



12



D

mp



20



E

f



28

Zur Coda



F

mp



36



MHDT

G
2

Musical staff G, measures 2-43. Treble clef, 7/8 time signature. Starts with a forte (*f*) dynamic. The melody consists of eighth and quarter notes with various rests.

Musical staff G, measures 44-59. Treble clef, 7/8 time signature. Continuation of the melody from staff G.

H Bridge **I**

Musical staff H, measures 60-59. Treble clef, 7/8 time signature. Starts with a mezzo-piano (*mp*) dynamic, then moves to forte (*f*). Includes a measure rest of 8 measures.

D.S. al Coda

Musical staff H, measures 60-59. Treble clef, 7/8 time signature. Continuation of the melody from staff H.

J \emptyset half time feel

Musical staff J, measures 60-67. Treble clef, 7/8 time signature. Starts with a forte (*f*) dynamic. The feel changes to half time.

A tempo

Musical staff J, measures 68-77. Treble clef, 7/8 time signature. Continuation of the melody from staff J.

K

Musical staff K, measures 78-87. Treble clef, 7/8 time signature. Starts with a mezzo-forte (*mf*) dynamic.

L

Musical staff L, measures 78-87. Treble clef, 7/8 time signature. Starts with a forte (*f*) dynamic.

Musical staff L, measures 80-87. Treble clef, 7/8 time signature. Continuation of the melody from staff L.

M

Musical staff M, measures 88-97. Treble clef, 7/8 time signature. Starts with a forte (*f*) dynamic.

Musical staff M, measures 88-97. Treble clef, 7/8 time signature. Continuation of the melody from staff M.