

Girl

Altsaxophon in Es



Berlin Brass Festival | Grande Fanfare

Moni Schönfelder / Beat 'n Blow

M. Schönfelder / J. Vollerthun

A ♩ = 155



B



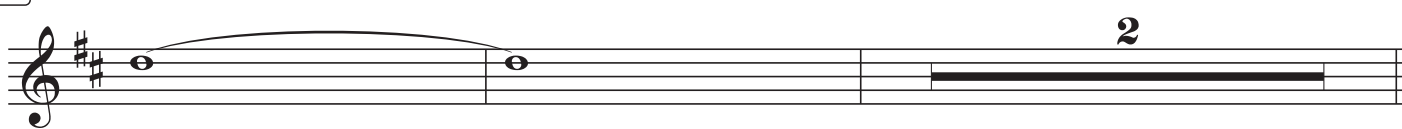
C



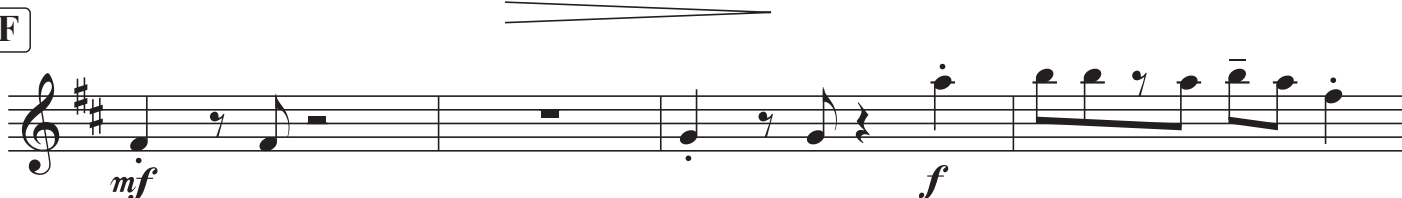
D



E



F



43

mf

This staff contains measures 43 through 48. It begins with a treble clef and a key signature of two sharps (F# and C#). The music consists of quarter and eighth notes with rests. A dynamic marking of *mf* is placed below the first measure.

G

f

This staff contains measures 49 and 50. It continues the melodic line from the previous staff. A dynamic marking of *f* is placed below the first measure.

51

This staff contains measures 51 through 56. It continues the melodic line. A dynamic marking of *f* is placed below the first measure.

H

GIRL

ff *mf* *f*

This staff contains measures 57 through 62. It features a vocal line with a fermata on the first measure. A dynamic marking of *ff* is placed below the first measure, *mf* below the second measure, and *f* below the fifth measure. An octagonal graphic containing the word "GIRL" is positioned above the first measure.

59

mf

This staff contains measures 63 through 68. It includes first and second endings. A dynamic marking of *mf* is placed below the first measure.

I

mf

This staff contains measures 69 through 74. It continues the melodic line. A dynamic marking of *mf* is placed below the first measure.

J

f

This staff contains measures 75 through 80. It includes first and second endings. A dynamic marking of *f* is placed below the first measure.

K

GIRL

ff *mf* *f*

This staff contains measures 81 through 86. It features a vocal line with a fermata on the first measure. A dynamic marking of *ff* is placed below the first measure, *mf* below the second measure, and *f* below the fifth measure. An octagonal graphic containing the word "GIRL" is positioned above the first measure.

78

mf

This staff contains measures 87 through 92. It continues the melodic line. A dynamic marking of *mf* is placed below the first measure.

L

mf *f*

This staff contains measures 93 through 98. It continues the melodic line. Dynamic markings of *mf* and *f* are placed below the first and fifth measures, respectively.

86

mf

This staff contains measures 99 through 104. It includes first and second endings. A dynamic marking of *mf* is placed below the first measure.