

Tenorhorn

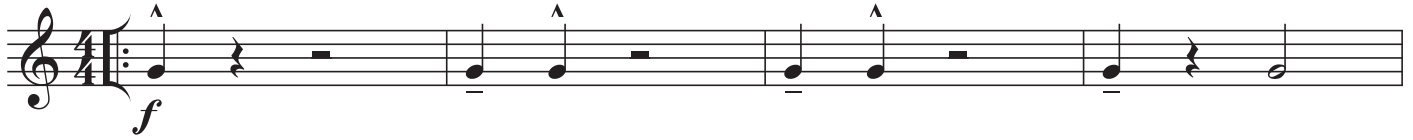
Formula (Funky 2) - Absolute Beginners Brass

Berlin Brass Festival

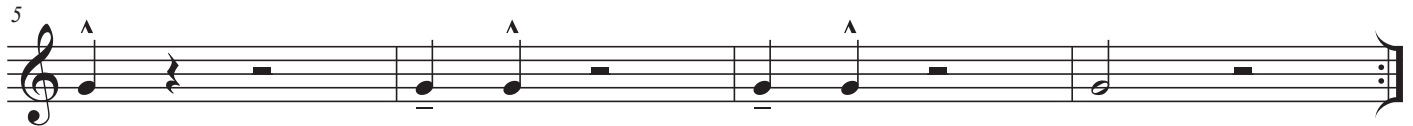
St. Pahlke | J. Vollerthun



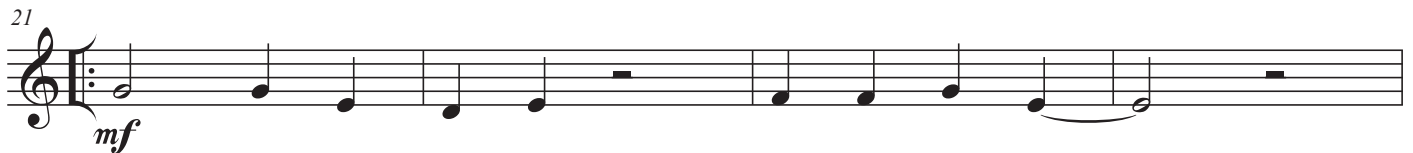
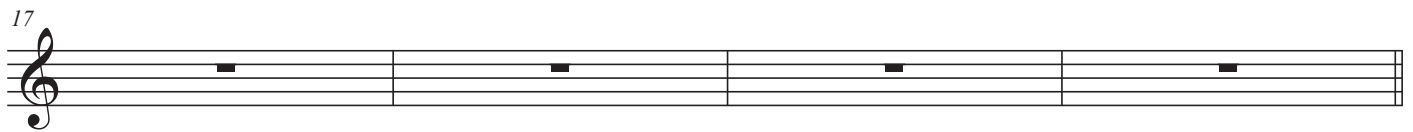
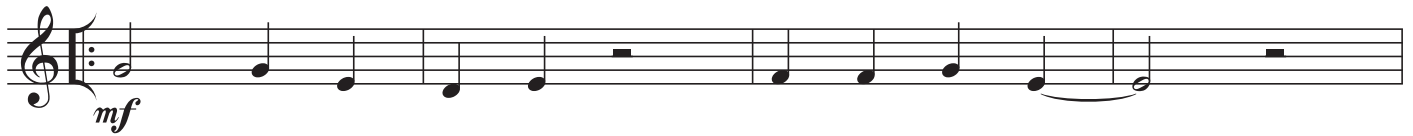
A ♩ = 160 oder ♩ = 80 (in Halben zählen fällt leichter)



4 x spielen



B ♩ = 160 oder ♩ = 80 (in Halben zählen fällt leichter)



"Formula" - allgemeine Notation

A ♩ = 80 4 x spielen

f

B ♩ = 80

mf

37 2

39

mf